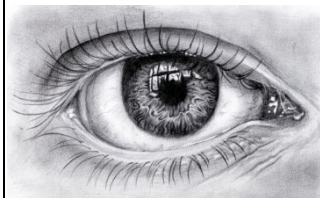


Topic: Topic: Year 7

The Formal Elements are the parts used to make a piece of artwork. The art elements are line, shape, form, tone, texture, pattern, colour. They are often used together, and how they are organised in a piece of art determines what the finished piece will look like.

Tone – Spring One

Tone means how light or dark something is. The tones artists and designers use and the contrast between them can create very different moods and visual effects.



Duration:

Composite: Unit test

Key vocabulary:

Core knowledge Components

Powerful knowledge/Skills components crucial to commit to long term memory

Links to previous and future topics

- Tone
- Contrast
- Depth
- Form
- Highlight
- Monotone
- Shade
- Shadow
- Tint
- Hatching

Why do artists use tone?

Recognising the tone or value of a colour, rather than the hue, is important to an artist because successful artwork have tonal contrast in them, or a range of values. A piece of artwork with only mid-tones risks being flat and dull. The illusion of form can be created by using different tone.

Mixing tones – Creating different tones - In pencil, paintings or pastel work, different tones can be created by mixing different colours together. Black, white and grey can be mixed to make varied tones in a monotone piece. They can be added to a colour to create tints, shades and tones.

Mark Making - Mark making describes the different lines, dots, marks, patterns and textures created in a drawing. It can apply to any drawing materials. It can be loose and expressive or controlled and neat

Pencil Shading – Shading is used to create different tones in a drawing. A range of different techniques can be used to build up tones.

Observational drawing - Observational drawing is drawing what you see. It can be a flower, a person, a still life, a landscape, whatever. But it's drawing what you see in front of you as realistically and as true to life as possible

TIMELINE Artists / BAME:

BIRMINGHAM IMAGES **contemporary photography**

In real life tone is created by the way light falls on an object. The parts of the object on which the light is strongest are called **highlights** and the darker areas are called **shadows**.

Tonal scales- are ways of exploring tonal values. It is a common exercise in art classes to be asked to create a tonal scale. This can be done with pencil, charcoal or paint.



Tone can be used for a range of effects:

- to create the illusion of **form(3D)**
- to create an atmosphere
- to create **contrast** and focus attention
- to suggest **depth** and distance

Tonal drawing - is the variation of black to grey that is given to a drawing on paper usually with a pencil. Tonal drawing is the art of gradual increase or decrease from light to dark from one part of the drawing to another to make it 3D and life like.

Hatching

Hatching involves building tone using lines.

- Using the line and colour they have learnt about previously and incorporate tones within them to make artwork 3D.
- Year7 skills-based project will help them in yr8 when they will have a project linked to an outcome. Very much like the GCSE criteria.

- **UNIT TEST: 40 min observational drawing encompassing everything they have learnt about drawing Tone.**

2. ZENTANGLES

Radiating pattern

A pattern that is arranged around a central point is called a radiating pattern. It seems to radiate out in all directions.

How and what? Zentangle patterns

- Students explore Zentangle patterns.
- Use of fineline pens to create their own Zentangle patterns
- Possibility of creating portrait Zentangles using photography
- Draw and outline animals, objects and fill with Zentangle patterns

Skills Aboriginal Art / Zentangles

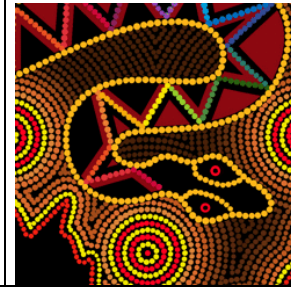
Learn about the styles, stories and symbols of this enduring Australian ancient art form and show you how to use that knowledge to create your own drawings and paintings. Explore the zentangle artform and create own design.

Topic: Topic: Year 7

The Formal Elements are the parts used to make a piece of artwork. The art elements are line, shape, form, tone, texture, pattern, colour. They are often used together, and how they are organised in a piece of art determines what the finished piece will look like.

Pattern – Spring Two

A pattern is a design in which lines, shapes, forms or colours are repeated. The part that is repeated is called a motif. Patterns can be regular or irregular



Duration:

**Composite:
Unit test**

Key vocabulary:

Core knowledge Components

Powerful knowledge components crucial to commit to long term memory

Links to previous and future topics

- Decorate
- Motif
- Repeat
- Rotation
- Pattern
- Design
- Objects
- Flow
- Detail
- Spiral
- Organic
- Geometric
- Natural
- Made
- Aboriginal

1. Experimenting with a range of Techniques with a 'Pattern' focus
2. Understanding of the term and how to apply it within the subject
3. Greater understanding of Artists that use pattern within their work

What is a pattern?
Patterns are all around us, in nature as well as in art and design.

Pattern in expressive arts
Pattern is a key part of organising and decorating design.

Exploration of:

- **Natural Pattern**
- **Man- Made Pattern**

Zen tangle Patterns - use of symmetry, repetition and repeated pattern. How limited colour is used to accentuate this, using black outline

Aboriginal Art – use of symbolic motifs and colours, in earth hues, linked to the environment from which they came. Use of imagery to tell stories and capture history and experience from aboriginal culture

SKILLS:

- How to create different types of patterns with different materials
- How to create a zentangle
- How to create a DREAM TIME aboriginal image

TIMELINE Artists/ BAME:

1. **ABORIGINAL ART**

- There are two basic types of pattern in art: **Natural Pattern** and **Man-Made Pattern**. Both natural and man-made patterns can be regular or irregular, organic or geometric, structural or decorative, positive or negative and repeating or random

Motifs
The starting point of any pattern is the single element that will be repeated. This is called a motif. A motif can be repeated and arranged in many ways in order to create different types of pattern.

Regular patterns
Patterns can be regular or irregular.

In regular patterns the motif (or motifs) is repeated in a way that is predictable

Irregular pattern
An irregular pattern is one in which the motif changes or the way it is repeated is unpredictable

Block repeat
The most basic way of creating pattern is to block repeat

Use of line, colour and tone to create pattern.

Year7 skills-based project will help them in yr8 when they will have a project linked to an outcome. Very much like the GCSE criteria.

UNIT TEST: 40 min contour line drawing composition with line, tone and pattern encompassing everything they have learnt about drawing Pattern

– much of our tone resources are technique demo images.

- **Hatching** uses parallel lines.
- **Crosshatching** uses lines that cross at different angles to each other.
- **Contour hatching** uses curved lines that follow the form of a subject.

A **tint** is where an artist adds a colour to white to create a lighter version of the colour. An example of a tint is pink. Pink is a tint created by adding white to red.

A **shade** is where an artist adds black to a colour to darken it down.

SKILLS:

Tonal scale using given media

Mark making

Observational drawing creating tone (pencil and use of a blending stick)

Possible photogrpaghy.

