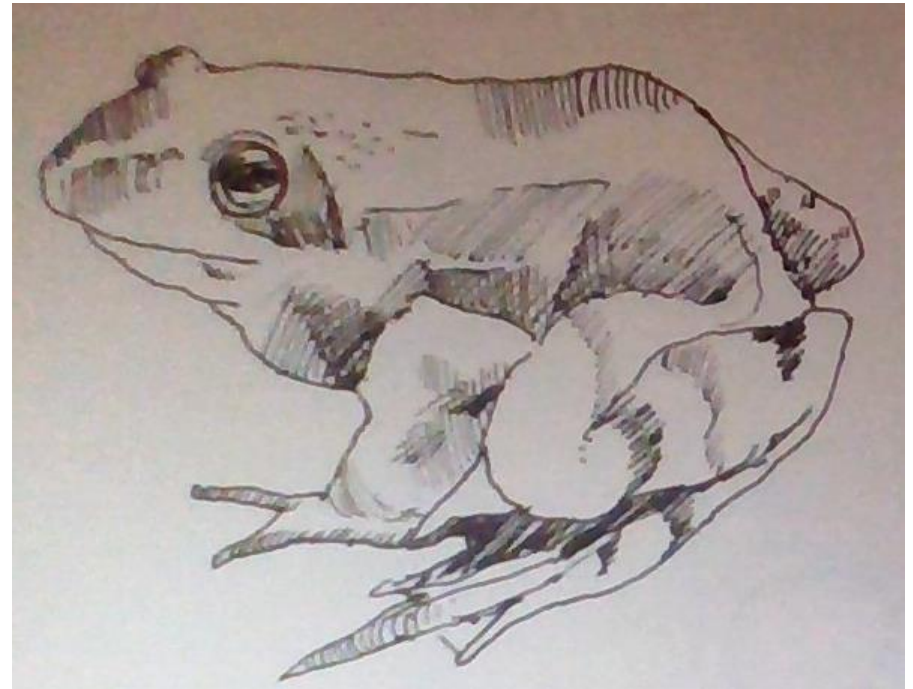


Year 9 ART
Assessment
Summer 2023 –
Inside/Outside

WHAT TO
REVISE?

- Your Art progress this term is going to be assessed on how well you can develop an idea and merge objects to create a Surreal drawing
- Your task is to develop a drawing using accurate recording from observation and creative use of your materials/resources

Your beginning : Year 9 inside/outside



We want to see how
much progress you
have made 😊



3

Year 9 Inside/Outside
– how it will be assessed 😊

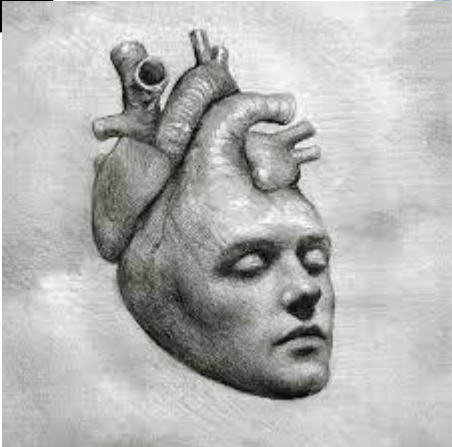
Grade 3: I can use my knowledge of designing and drawing to create a BASIC outcome. I can use BASIC shapes and tones in my drawing

2



Grade 2: I can use my knowledge of designing and drawing to create a **CONVINCING** merged design by combining 2 or more objects in the style of Remer Hoekstra

1



Grade 1: I can render my piece **ACCURATLY** and **INDEPENDENTLY** whilst showing **CREATIVITY** when developing ideas from my designs.

CW Y9 Summer ART Exam 2023 –Inside/Outside Date

To show us what you know about Surrealism and drawing, you will create a drawing of the following scene and apply:

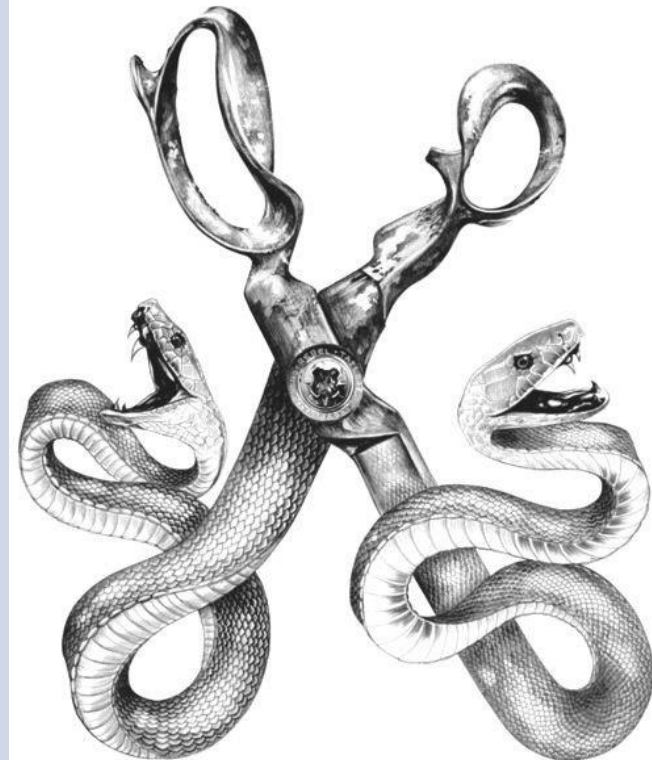
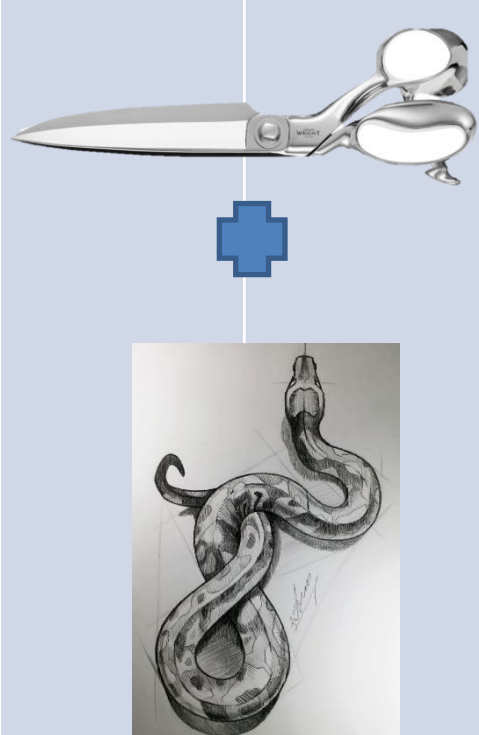
1. Accurate drawing
2. Accurate tonal value
3. Creative use of your resources and materials.

to create a colour image that MUST draw the image from observation, but you can add some extra features to show CREATIVITY and UNDERSTANDING

Plan out your piece by looking at your 4 design ideas

Choose your favourite design use find images to suit the piece.

Develop your drawing using tonal values and fine details. Try to merge your objects together smoothly to make it a convincing blend



• Grade 3:

• Grade 2:

• Grade 1:

This needs amending for inside outside

- Draw objects accurately
- Draw using 3 levels of tone

- Add a light source
- Show creativity and independence

- appropriate shadow values and tones
- Colour/texture in your work

ny
TLY

LY

en
ive

ATIVE